

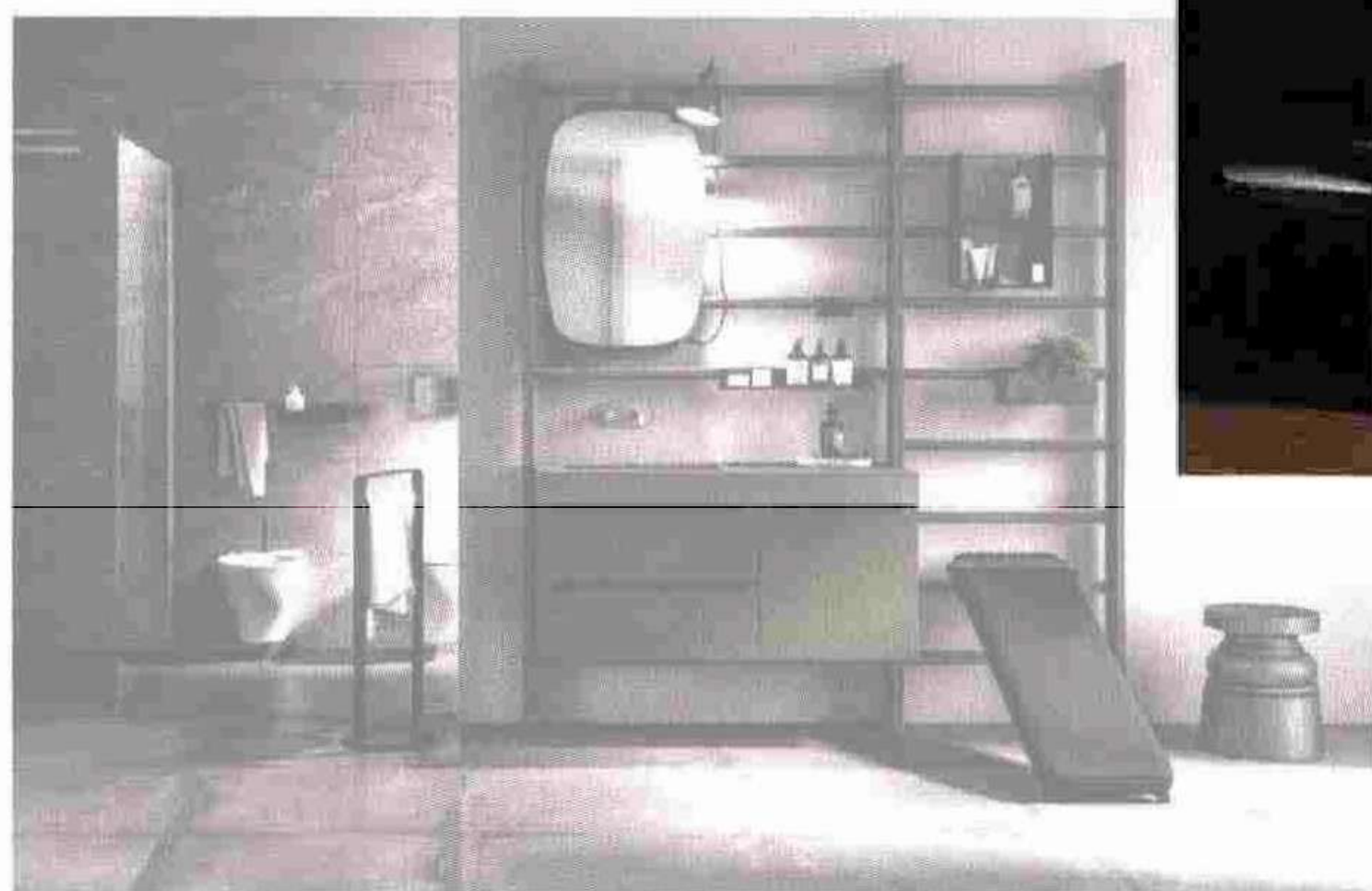
THE WELLNESS EDIT

Five pieces to help bring the happy into your bathroom

2

'GYM SPACE' BY SCAVOLINI

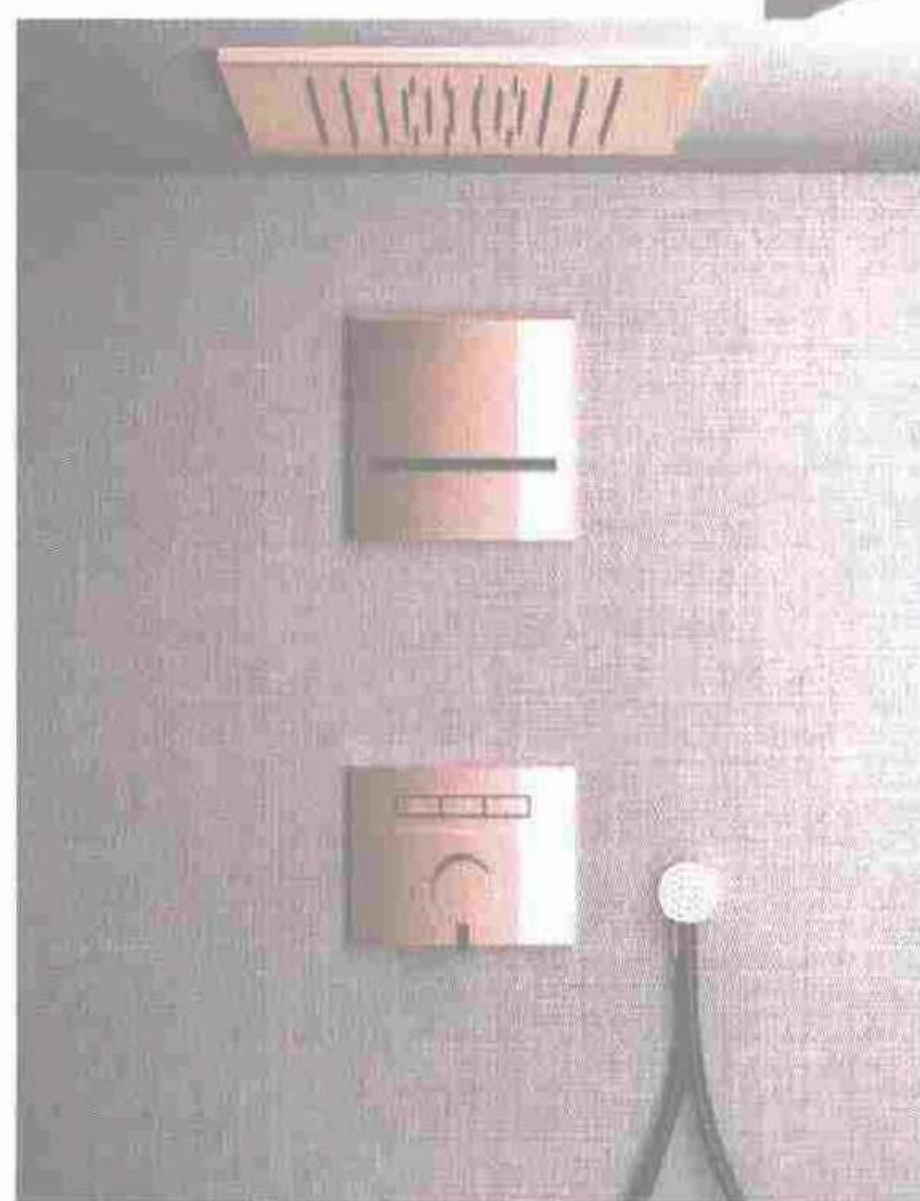
With home workouts shaping up to be an ongoing trend, Scavolini's 'Gym Space' collection could be a solution for gym bunnies short on space. The range revolves around a customisable wall frame, which acts as a base for gym equipment such as TRX bands, a weight bench or pull-up bars, as well as bathroom units and accessories including vanities, storage and lighting. From £5,000 (scavolini.com).



4

'HI-FI MIXER' BY GESSI

A cutting-edge showering system, Gessi's 'Hi-Fi' has the streamlined design of a classic stereo with controls to match. Temperature and flow rate are adjusted by dials (which satisfyingly click when turned up and down, just like a hi-fi), whereas types of water flow (rainfall, waterfall, hand shower and nebulizer) can be selected to suit the mood at the touch of a button. From £1,599 (gessi.com).



'SLATE SHOWER FLOOR' BY MATKI

Bringing a splash of nature to bathrooms, Matki's latest shower base is modelled on natural slate. Cast in stone resin, the material faithfully captures the texture of real stone, while its hardwearing gel coating feels warm underfoot. It's available in custom sizes and can also be colour matched to surrounding surfaces for a seamless look. From £416.40 (matki.co.uk).

3

'THIRTIES' COLLECTION BY SEVENTYONEPERCENT

Sister brand to ceramic surface firm Iris Ceramica, Seventyonepercent's debut collection of bathroom furniture is a collaboration with Italian designer **Paolo Castelli**. Featuring a rich palette of warm walnut, elegant Calacatta Oro marble and matt gold finishes, the 'Thirties' range is a glamorous, Italian-style take on spa luxury, turning everyday routines into indulgent me-time. Approx £16,224 (seventyonepercent.com).



5

'FLOTATION BATH TUB' BY TOTO

Winner of a Red Dot Design Award (the company's eighth consecutive win, no less), the 'Flotation' bath promotes deep relaxation via its innovative Zero Dimension technology, which helps the body achieve a weightless reclining position similar to an astronaut floating in space. Meanwhile, calibrated jets create a spiralling, therapeutic water motion, massaging the body as you drift off to cloud nine. £27,000 (gb.toto.com). ▶

