

S A M P L E



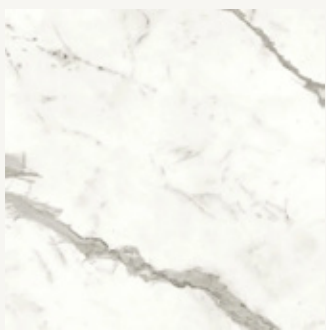
PAOLO CASTELLI

C H A R T

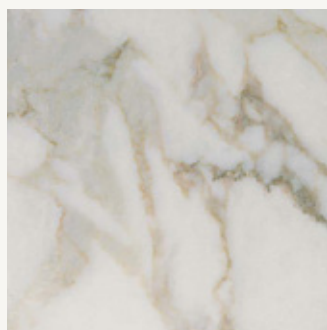
I colori/texture dei materiali rappresentati in questa cartella sono rappresentativi e potrebbero non corrispondere esattamente alla realtà per cui debbono essere considerati come campioni indicativi - The colors and textures of the materials shown here may not correspond exactly to their true appearance, and should therefore be considered indicative samples.

Surfaces

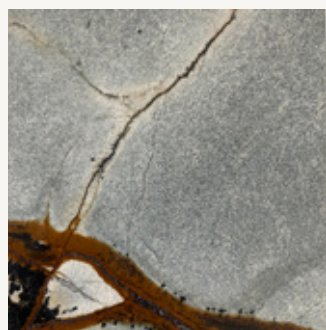
Marmi / Marbles



WHITE SILK MATT



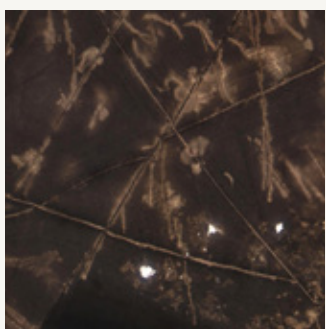
CALACATTA



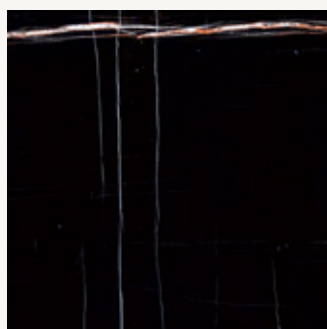
QUARZITE BLUE ROMA



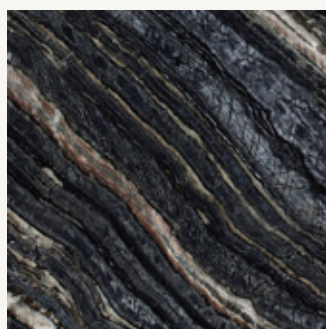
BRONZE AMANI



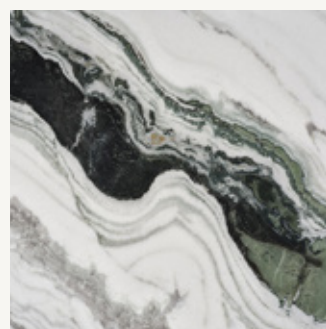
SAHARA BROWN



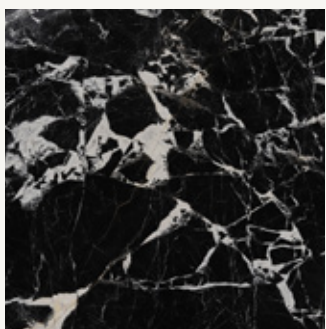
SAHARA BLACK



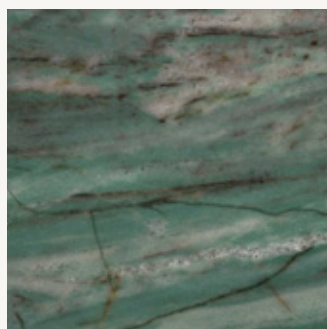
SILVER WAVE BROWN



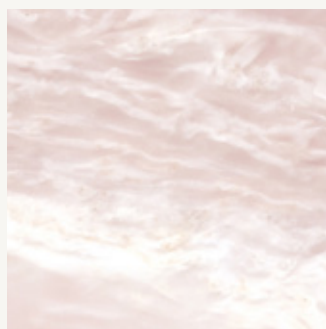
PANDA WHITE



GRAND ANTIQUE



EMERALD GREEN



ROSA EGEO

Pietre / Stones



PIETRA VICENTINA LEVIGATA
Avorio
SMOOTH VICENZA STONE
Ivory



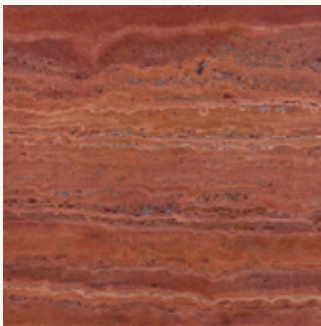
PIETRA VICENTINA SABBIA
Grigio Chiaro
SANDBLASTED VICENZA STONE
Light Grey



TRAVERTINO
Classico
TRAVERTINE
Classic



PIETRA DOLOMIA
DOLOMIA STONE



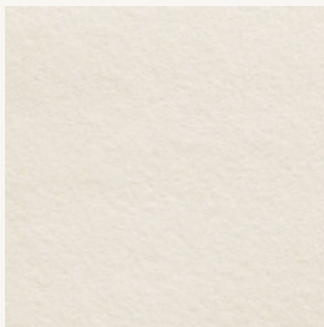
TRAVERTINO
Rosso
TRAVERTINE
Red
*not present in the sample box



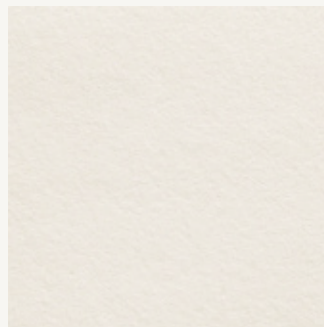
GRANITO ANTICO NERO
TEXTURE RIGATA
ANTIQUÉ BLACK GRANITE
STRIPED TEXTURE



PIETRA LECCESE
Beige
LECCE STONE
Beige
*not present in the sample box



PIETRA NATURALE
Bianco
NATURAL STONE
White
*not present in the sample box



PIETRA NATURALE
Dove
NATURAL STONE
Dove
*not present in the sample box

Pietre ricostituite / Reconstituted stones



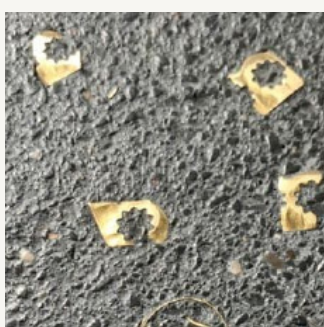
PIETRA RICOSTITUITA
Avorio
RECONSTITUTED STONE
Ivory



PIETRA RICOSTITUITA
Bianco COD. 78
RECONSTITUTED STONE
White COD. 78



PIETRA RICOSTITUITA
Grigio
RECONSTITUTED STONE
Grey



CARBONE NATURALE
RICOSTITUITO CON TRUCIOLI DI
OTTONE DA RECUPERO
RECONSTITUTED NATURAL
CARBON CONTAINING
RECYCLED BRASS SHAVINGS
*not present in the sample box

Legni / Woods

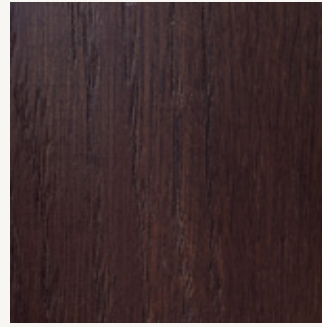
Impiallacciate realizzate in varie essenze su MDF
Wood veneering on MDF panels



FRASSINO SBIANCATO
BLEACHED ASHWOOD



FRASSINO TINTO NOCE
WALNUT STAINED ASHWOOD



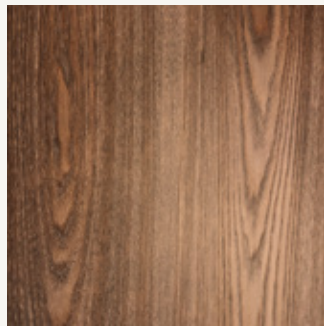
FRASSINO TINTO SCURO
DARK STAINED ASHWOOD
*not present in the sample box



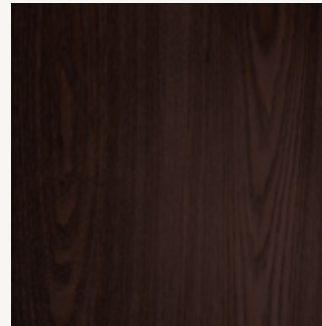
FRASSINO TINTO NERO
BLACK STAINED ASHWOOD



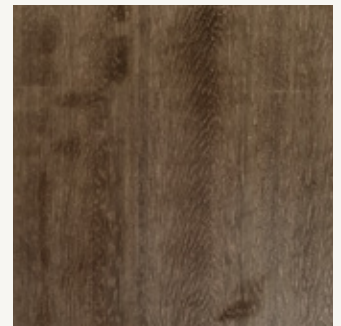
FRASSINO CON TRATTAMENTO
ACETICO
ACETIC FINISHED ASHWOOD



FRASSINO BRUNITO
Olivato Chiaro
BROWNEED ASHWOOD
Light Olive
*not present in the sample box



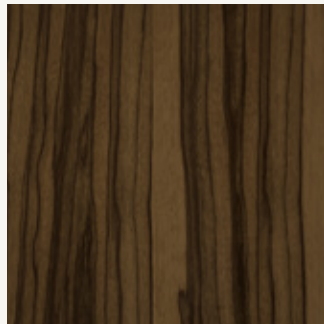
FRASSINO BRUNITO
Olivato Scuro
BROWNEED ASHWOOD
Dark Olive
*not present in the sample box



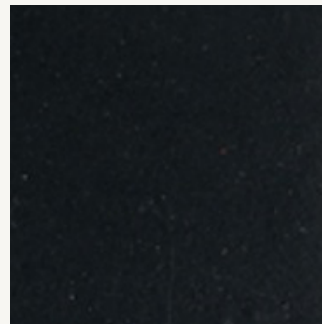
EUCALIPTO
EUCALYPTUS



NOCE CANALETTO OLIATO
OILED CANALETTO WALNUT
*not present in the sample box



FRAKÈ 100 GLOSS

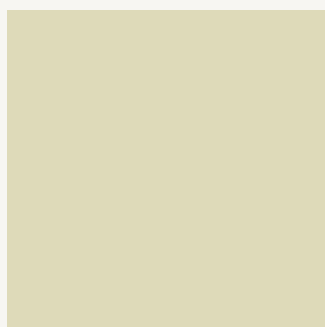


FAGGIO VERNICIATO
Nero Opaco
VARNISHED BEECHWOOD
Matt Black
*not present in the sample box

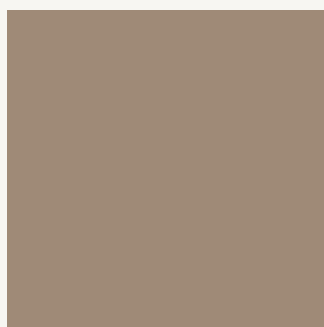


IROKO

Laccati / Lacquering



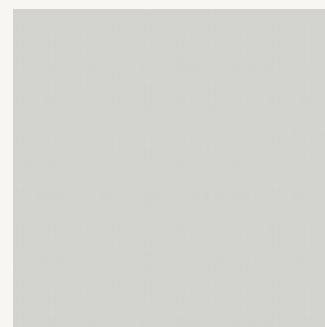
RAL 1013 100 GLOSS
Avorio / Ivory



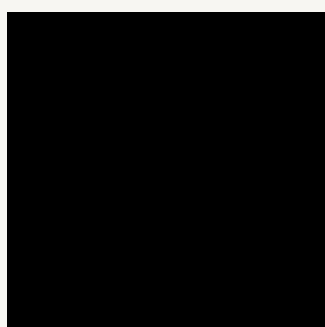
NCS 5010Y50R 100 GLOSS
Grigio Marrone / Grey Brown



RAL 8019 100 GLOSS
Marrone / Brown



NCS S 1500 N 100 GLOSS
Perla / Pearl



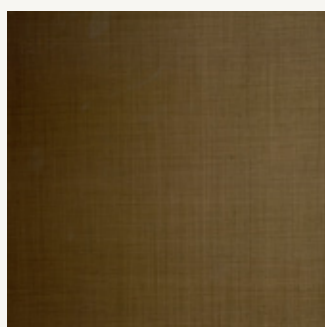
RAL 9005 100 GLOSS
Nero / Black



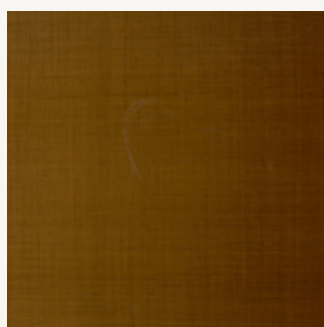
RAL 9005 / GOLD 100 GLOSS
Nero con Polvere Oro / Black with Golden Dust



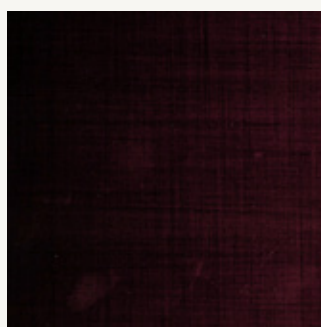
NCS S 6530G10Y 100 GLOSS
Verde / Green
*not present in the sample box



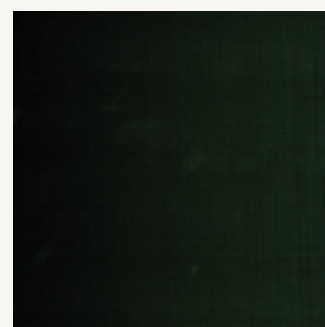
SAFFIANO PATTERN 100 GLOSS
Bronzo / Bronze
*not present in the sample box



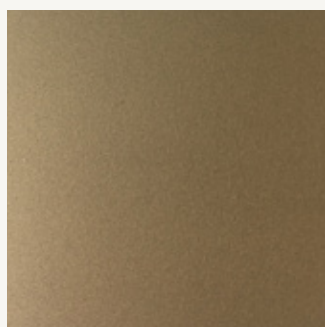
SAFFIANO PATTERN 100 GLOSS
Arancio / Orange
*not present in the sample box



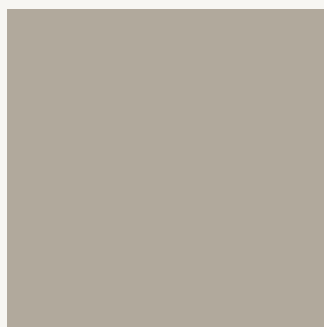
SAFFIANO PATTERN 100 GLOSS
Bordeaux / Burgundy
*not present in the sample box



SAFFIANO PATTERN 100 GLOSS
Verde / Green
*not present in the sample box

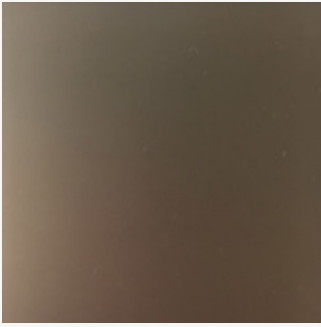


Oro Opaco / Matt Gold
*not present in the sample box

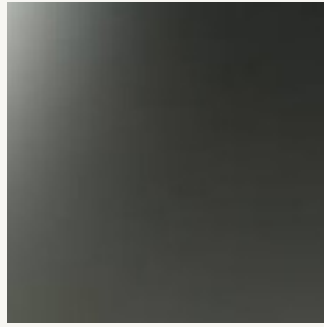


RAL 1035
Beige Perlato opaco / Matt Pearl
Beige
*not present in the sample box

Vetri / Glass



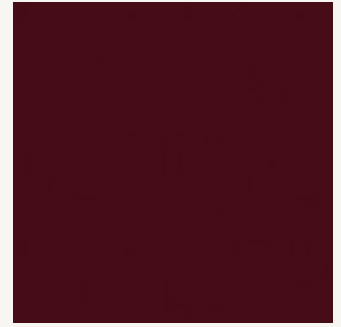
SPECCHIO SATINATO
Bronzo
MATT FROSTED GLASS
Bronze



SPECCHIO SATINATO
Grigio
MATT FROSTED GLASS
Grey



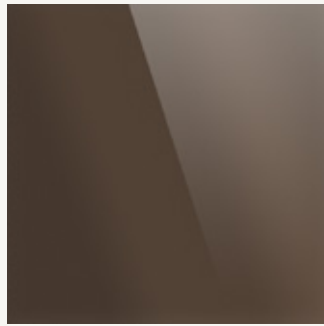
RAL 8019
Marrone / Brown



RAL 3007
Amaranto / Reddish Purple



TRANSPARENT
Avana



SPECCHIO LUCIDO
Bronzo
POLISHED MIRRORED GLASS
Bronze
*not present in the sample box

Ceramiche / Ceramics



CERAMICA DI VIETRI A COSTE
Bianco
RIBBED VIETRI CERAMIC
White



CERAMICA DI VIETRI A COSTE
Grafite
RIBBED VIETRI CERAMIC
Graphite
*not present in the sample box



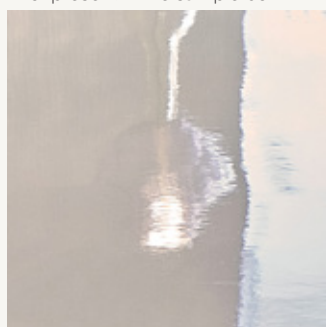
GRES
Salvia / Sage



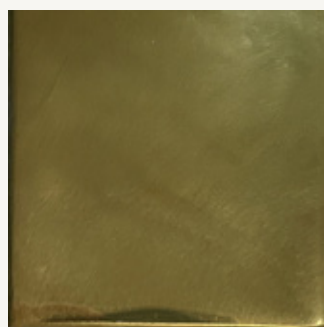
GRES
Oceano / Ocean



GRES
Terracotta



GRES
Grigio / Grey
*not present in the sample box



GRES
Finitura Metallica Ottone / Metallic
Brass Finished



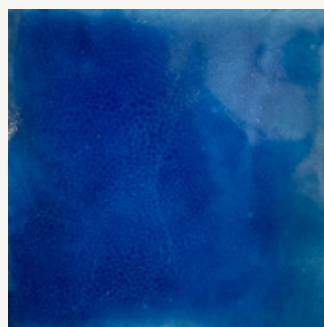
GRES
Finitura Metallica Zinco / Metallic
Zinc Finished



CERAMICA DI VIETRI SMALTATA
Bianco
GLAZED VIETRI CERAMIC
White



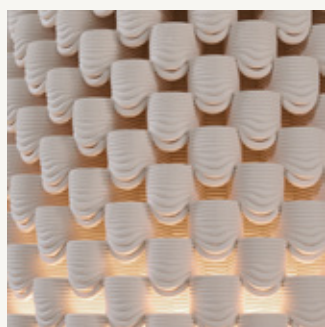
CERAMICA DI VIETRI SMALTATA
Giallo
GLAZED VIETRI CERAMIC
Yellow



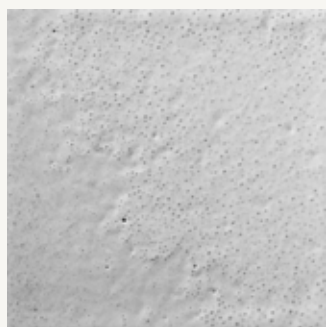
CERAMICA DI SICILIA
Blu
SICILIAN CERAMIC
Blue
*not present in the sample box



CERAMICA DI SICILIA
Bianco
SICILIAN CERAMIC
White
*not present in the sample box



3D PRINTED NATURAL FIRED
GRES
*not present in the sample box



CERAMICA DI FAENZA OPACA
Bianco Sporco
MATT FAENZA CERAMIC
Off - White

Metalli / Metals



BRONZO SHADOW OPACO
MATT SHADOW BRONZE



BRONZO OTTONE OPACO
MATT BRONZED BRASS



ORO LUCIDO
POLISHED GOLD



ORO OPACO
MATT GOLD



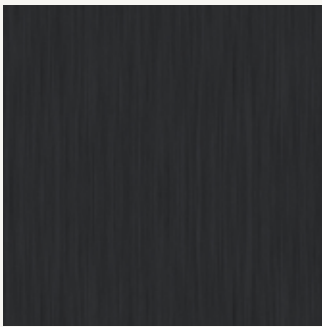
CHAMPAGNE A SATINATURA
ORBITALE
CHAMPAGNE ORBITAL SATIN



OTTONE LUCIDO
POLISHED BRASS
*not present in the sample box



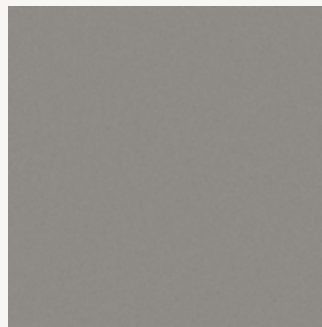
OTTONE OPACO SATINATO
MATT SATIN BRASS
*not present in the sample box



NICHEL NERO OPACO
MATT BLACK NICKEL

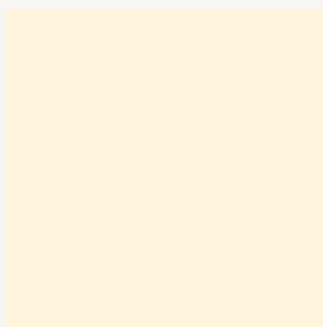


NICHEL NERO LUCIDO
POLISHED BLACK NICKEL

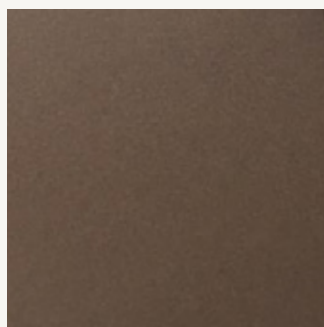


TITANIO OPACO
MATT TITANIUM
*not present in the sample box

Metalli Verniciati / Varnished Metals



RAL 9010
Avorio / Ivory



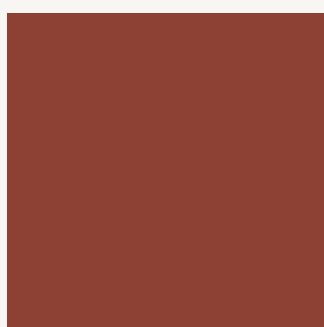
Bronzo / Bronze



RAL 9004
Nero / Black
*not present in the sample box



RAL 7032
Grigio Ghiaia / Pebble Grey
*not present in the sample box



NCS S3560-Y80R
Mattone / Brick
*not present in the sample box

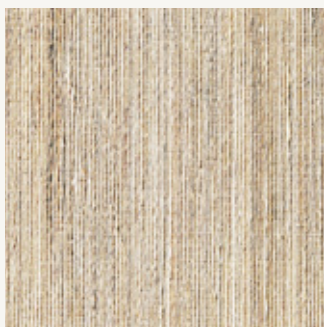
Laminati / Laminated

Laminato metallico in finitura Oro Satinato spazzolato
Laminated metal - matt gold brushed finish



ORO SATINATO
SATIN GOLD
*not present in the sample box

Materiali speciali / Special materials



FIBRA DI CANAPA NEPALESE
Beige
NEPALESE HEMP FIBER
Beige



FIBRA DI CANAPA NEPALESE
Turchese
NEPALESE HEMP FIBER
Turquoise

89% canapa 6% nylon 5% PL su supporto non tessuto
89% hemp 6% nylon 5% PL on non woven backing



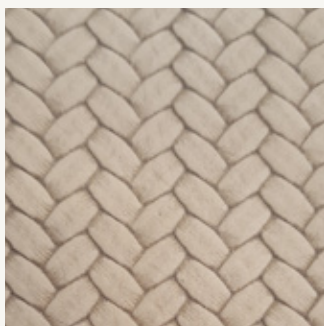
TRAVERTINO RICOSTITUITO
Avorio
RECONSTITUTED TRAVERTINE
Ivory



TRAVERTINO RICOSTITUITO
Terra di Siena bruciata
RECONSTITUTED TRAVERTINE
Burnt Sienna

Il Travertino Ricostituito è composto da una miscela di polvere di travertino, pietra lavica, cemento ecrù (col. Avorio) o coccio pesto (col. Burnt Sienna), legati insieme da un legante idraulico. Infine, viene rifinito con un protettivo trasparente formulato appositamente per resistere agli agenti atmosferici esterni, garantendo una protezione duratura e una bellezza senza tempo.

In both the Ivory and Terra color alternatives, Reconstituted Travertine consists of a blend of travertine powder, lava stone, ecrù cement (in Ivory version) or crushed clay (in its Burnt Sienna version), bonded together by a hydraulic binder. It is then finished with a specially formulated transparent protective coating to resist external weathering agents, thus ensuring longlasting protection and timeless beauty



NABUK INTRECCIO TAUPE
TAUPE TWISTED NUBUCK
COL. 15

Caratteristiche / Features

Composition	Natural Leather / Nabuck
Certification test passed	IMO FTFC 8; BS 5852-1:1979; TB 117:2013; UNI EN ISO 105-B02; UNI EN ISO 5402-1; UNI EN ISO 3377-1; UNI EN ISO 3376; UNI EN ISO 3376
Washing	

I colori/texture dei materiali rappresentati in questa cartella sono rappresentativi e potrebbero non corrispondere esattamente alla realtà per cui debbono essere considerati come campioni indicativi - The colors and textures of the materials shown here may not correspond exactly to their true appearance, and should therefore be considered indicative samples.

Covers

Cat. A Superior | CHENILLE DZ-YOU

Caratteristiche / Features	
Composition	100% PL
Martindale	40.000
Cartification Test Passed	EN ISO 12947-2, ISO 12945-2, ISO 105 X 12, ISO 105 - B02, CAL TB 117:2013
Washing	



0100 Avorio / Ivory



0025 Beige



0057 Noce / Walnut



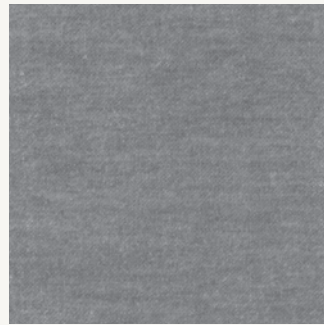
0059 Marrone / Brown



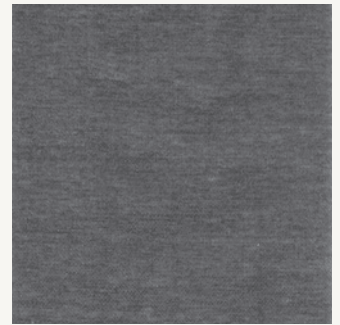
0030 Ruggine / Rust



0009 Vino / Wine



0031 Grigio Chiaro / Light Grey



0084 Grigio Scuro / Dark Grey



0062 Verde / Green



0041 Blu / Blue



0013 Azzurro / Light Blue

Cat. A Superior | BYR CHENILLE

Caratteristiche / Features	
Composition	94% PL; 4% AE;
Martindale	40.000
Cartification Test Passed	CAL TB 117; CIGARETTE EN 1021-1:2014; MATCH EN 1021-2:2014; CALIFORNIA TEST TB 117:2013
Washing	



100 Avorio / Ivory



304 Mattone / Brick



400 Lino / Linen



402 Tortora / Taupe



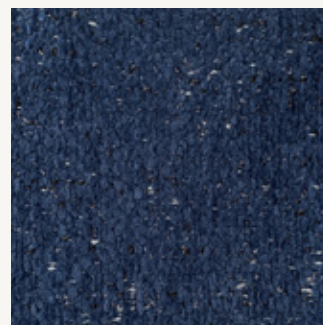
601 Grigio / Grey



605 Antracite / Charcoal Grey

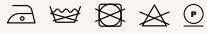


702 Ottanio / Teal



704 Blu / Blue

Cat. A Superior | BLENDED LINEN

Caratteristiche / Features	
Composition	76% VI; 13% CO; 8% LI; 3% PA;
Martindale	100.000
Cartification Test Passed	UNI 9175; UNI 8456; UNI EN1021; BS5852
Washing	



Gog Avorio / Ivory



400 Corda / Rope



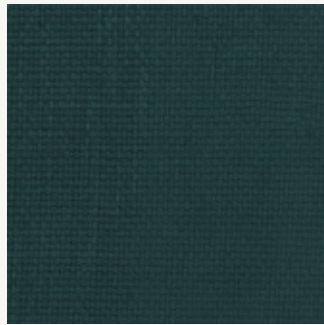
406 Lino / Linen



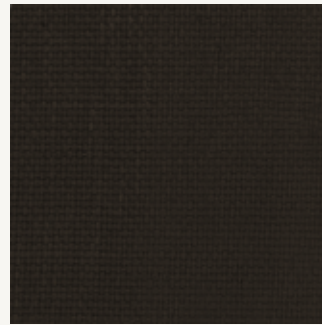
20 Grigio / Grey



902 Rosa antico / Antique pink



807 Ottanio / Teal




405 Moro / Dark Brown



28 Grigio chiaro / Light grey

Cat. A Superior | LUC CHENILLE

Caratteristiche / Features	
Composition	100% POLYESTER
Martindale	40.000
Certification Tests Passed	BS5852; UK- BS 5852 PART1/CRIB5; EU- EN11021 1/2; US- CAL 117; IMO- IMOFTPC PART 7/8
Washing	



0159 Beige



0262 Noce / Noix



0365 Tortora / Vision



0468 Acciaio / Acier



0571 Antracite / Charcoal Grey



0674 Ardesia / Ardoise



0777 Blu Céladon / Bleu Céladon



0880 Verde Bosco / Vert sous Bois



0983 Cammello / Camel



1086 Ruggine / Rouille

Cat. A Superior | SHEEPLAND

Caratteristiche / Features	
Composition	29% PL; 29% PC; 21% CO; 15% WO; 6%VI;
Martindale	40.000
Cartification Test Passed	BS 5852:1979 IGN.CIGARETTE; TB 117 -2013
Washing	



01 Avorio / Ivory



02 Lino / Linen



04 Ocra / Ochre



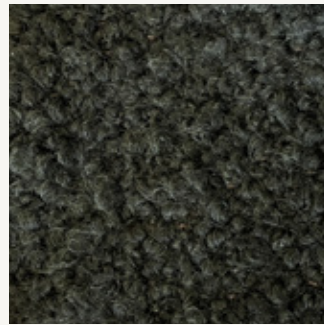
05 Terracotta



06 Marrone Scuro / Dark Brown



07 Grigio / Grey

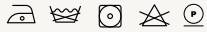


12 Verde Scuro / Dark Green



99 Nero / Black

Cat. B Superior | LIM PARCOT CANNETÈ

Caratteristiche / Features	
Composition	60% RECYCLED CO; 20% PL; 20% PC;
Martindale	40.000
Cartification Test Passed	UNI EN ISO 12947-2; ISO 12945-2; UNI EN ISO 105-B02; BS 5852 CIGARETTE; CAL TB 117
Washing	



25 Avorio / Ivory



29 Perla / Pearl



27 Beige



33 Azzurro / Light Blue




32 Grigio / Grey



37 Giallo / Yellow

Cat. B Superior | VELVET MANA

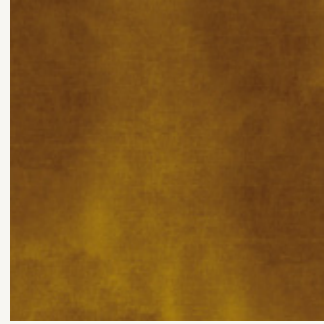
Caratteristiche / Features	
Composition	100% PES
Martindale	88.000
Certification test passed	BS5852; BS 5852 PART1/CRIB5, EU- EN11021 1/2, US- CAL 117, IMO- IMOFTPC PART 7/8
Washing	



1231 Champagne



0714 Tortora / Dove



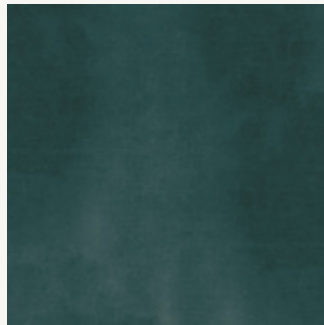
2913 Cammello / Camel



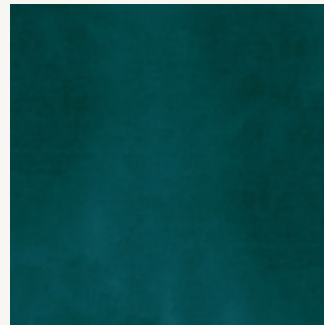
2610 Oliva / Olive



2442 Verde Grigio / Green Grey



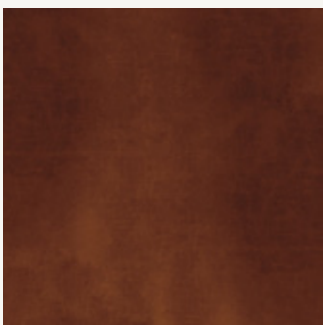
2204 Ottanio / Teal



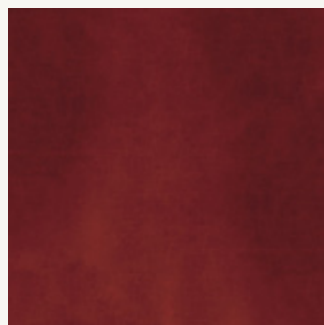
2195 Topazio / Topaz



2058 Blu Marine



1414 Cuoio / Leather



1734 Rosso / Red



1836 Rosa / Rose



0477 Grigio / Grey

Cat. B Superior | VELLUTO A&E

Caratteristiche / Features	
Composition	100% CO
Martindale	50.000
Certification Tests Passed	BS 5852 PART1/CRIB5, Match test with interliner_CE, Cigarette test with interliner_CE, Attestation M1 with treatment_CE
Washing	



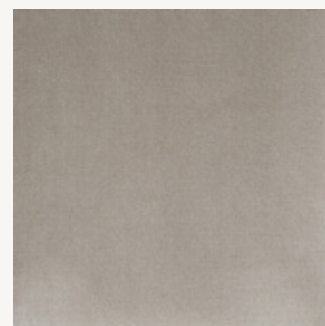
179 Bianco / White



178 Ostrica / Oyster



129 Roccia / Stone



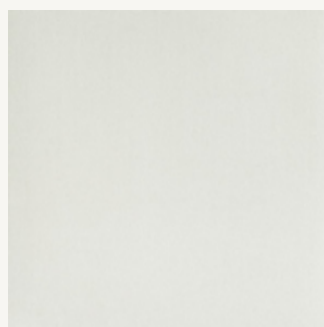
136 Smoke



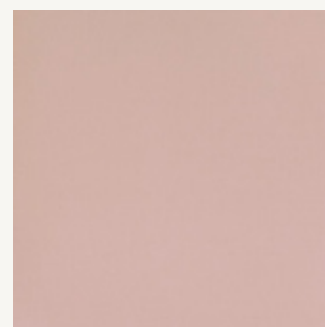
134 Ebano / Ebony



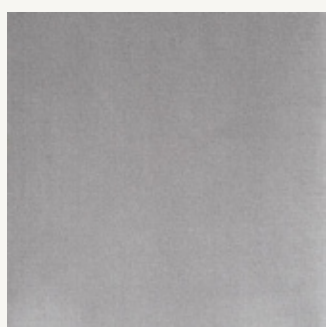
175 Fumo



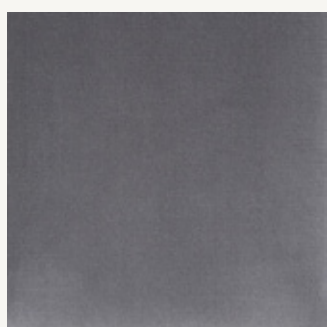
155 Perle / Pearl



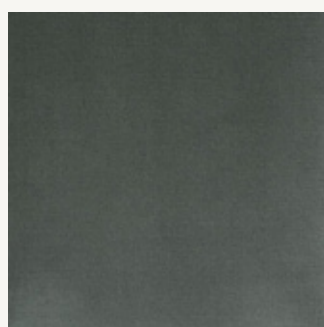
182 Bois de Rose



139 Argento / Argent



107 Antracite / Charcoal



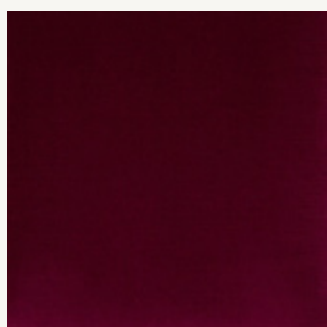
169 Cactus



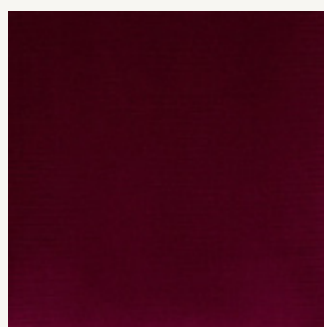
104 Indigo



103 Blue De Prussie



120 Vino / Wine



119 Prugna / Plum



138 Nero / Black

Cat. B Superior | SATEEN OA

Caratteristiche / Features	
Composition	56% CO; 44% RECYCLED POLYESTER
Martindale	35.000
Cartification Test Passed	BS5852; UK- BS 5852 PART1/CRIB5; EU- EN11021 1/2; US- CAL 117; IMO- IMOFTPC PART 7/8
Washing	



0332 Avorio / Ivory



0408 Lino / Linen



0777 Perla / Souris



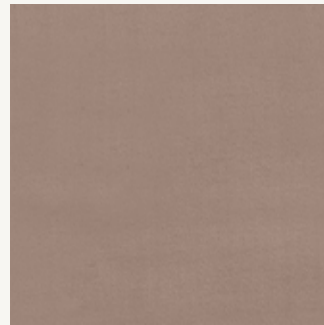
0653 Grigio / Grey



0590 Corda / Rope



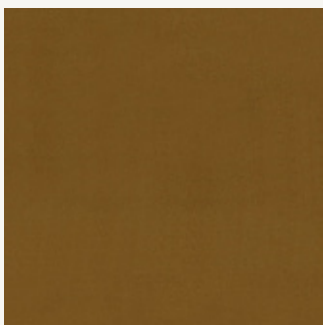
1546 Moka



1791 Rosa Cipria / Powder pink



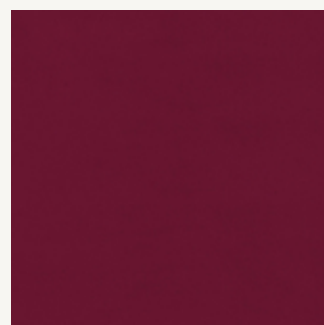
1685 Terracotta



1439 Cognac



1372 Zafferano / Saffron Yellow

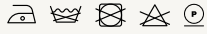


2310 Bordeaux / Burgundy



0933 Asfalto / Asphalte

Cat. C Deluxe | BOUCLÈ WOOL

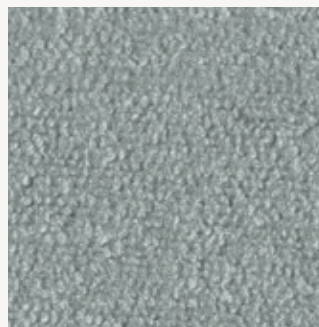
Caratteristiche / Features	
Composition	54%WO; 19%CO; 15%VI; 10%LI; 2%PL;
Martindale	32.000
Certification Test Passed	BS5852 SCHEDULE 4/5 PART 1
Washing	



02 Tortora / Taupe



03 Lino / Linen



04 Perla / Pearl

Cat. C Deluxe | LUXURY CHENILLE LIMLUCI

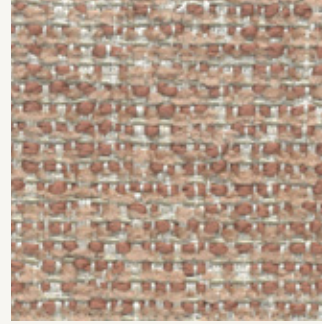
Caratteristiche / Features	
Composition	48% PL; 21% PC; 15% CO; 11% VI; 5% LI;
Martindale	50.000
Certification Test Passed	UNI EN ISO 12947-2; ISO 12945-2; UNI EN ISO 105-B02; BS 5852 CIGARETTE; CAL TB 117
Washing	



20 Avorio / Ivory



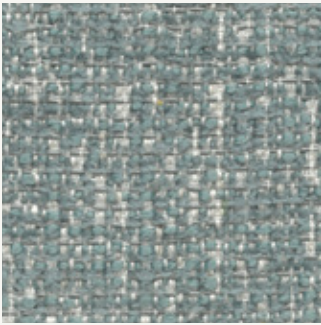
03 Beige



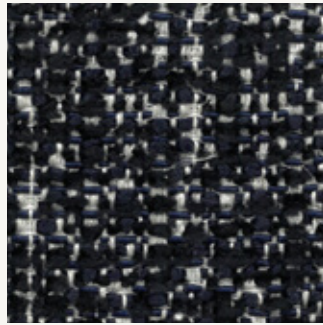
25 Rosa / Pink



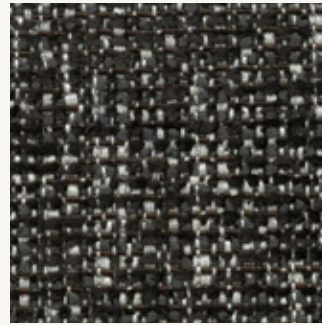
22 Odra / Ochre



12 Azzurro / Light Blue



07 Blu / Blue



17 Marrone / Brown

Cat. D Deluxe | JACQUARD FLO

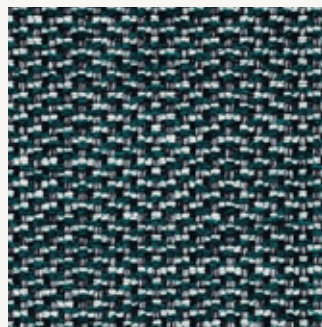
Caratteristiche / Features	
Composition	30% PES; 30% VI; 19% PC; 14% LI; 7% CO;
Martindale	50.000
Washing	



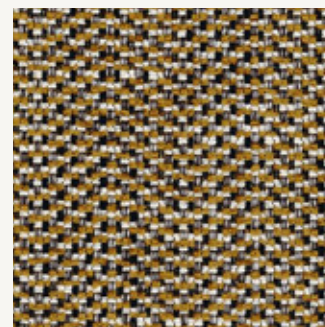
0218 Gris Anthracite / Antracite



0121 Noir de Lune / Nero di Luna

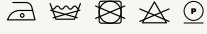


0323 Petrole / Petrolio



0503 Ambre / Ambra

Cat. D Deluxe | JACQUARD TWIST

Caratteristiche / Features	
Composition	50% CO; 35% PAN; 10% PES; 5% SON;
Martindale	40.000
Certification Test Passed	BS EN 1021-1: 2014
Washing	



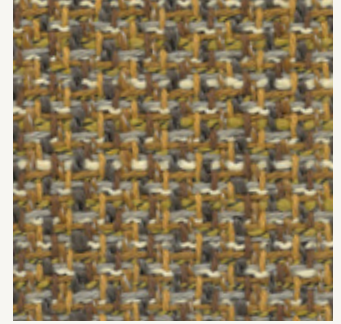
CA 1570/071 Beige



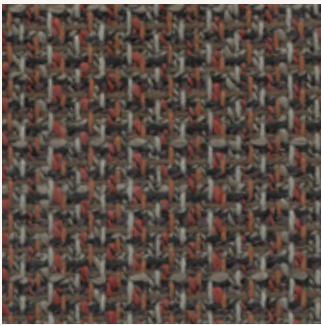
CA 1570/082 Verde / Green



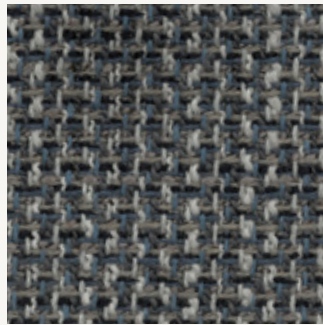
CA 1570/020 Tortora / Taupe



CA 1570/040 Odra / Ochre



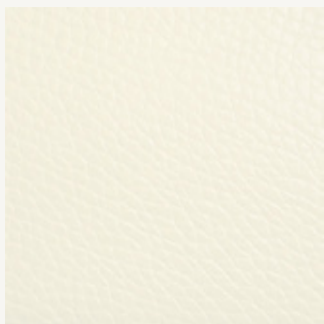
CA 1570/061 Ruggine / Rust



CA 1570/050 Blu / Blue

Cat. E | Ecopelle TOP / Eco Friendly Leather TOP

Caratteristiche / Features	
Composition	85% PVC; 15% PL;
Certification test passed	UNI EN 1021- 1+2; BS5852-1 (1979); TB 117-A11 (2013)
Washing	



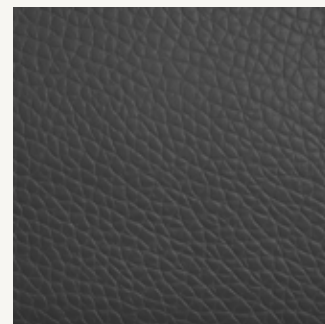
100 Avorio / Ivory



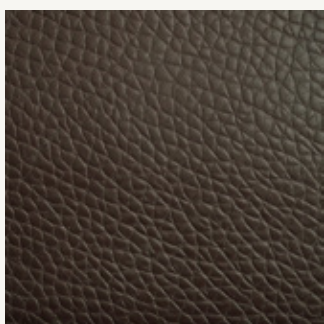
406 Fango / Mud



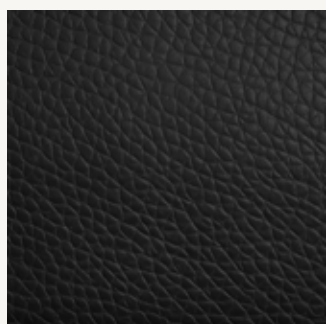
407 Sabbia / Sand



607 Grigio / Grey

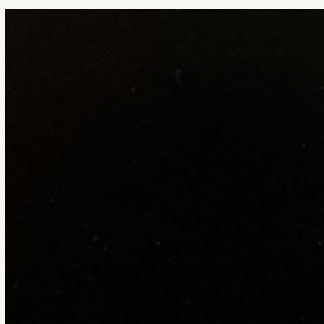


415 Moro / Dark brown

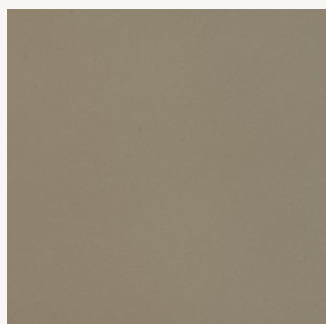


200 Nero / Black

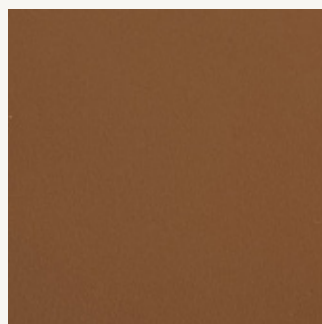
Cat. O | Cuoio Leather



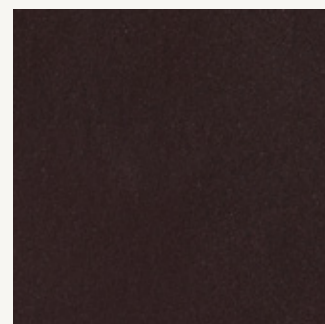
02 Nero / Black



07 Sabbia / Sand



26 Naturale / Natural



27 Testa Di Moro / Dark Brown

Cat. F | Pelle Bovina / Bovine Leather

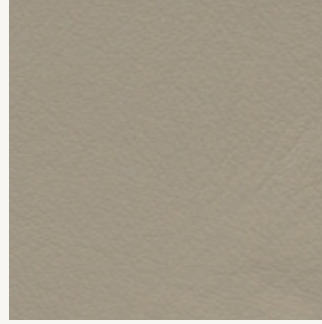
Caratteristiche / Features	
Composition	Natural Leather
Certification test passed	BS5852:2006; TB 117:2013; EN ISO 11640; EN ISO 105-B02; EN ISO 3377-1; EN ISO 5402
Washing	



00/1 Vaniglia / Vanilla



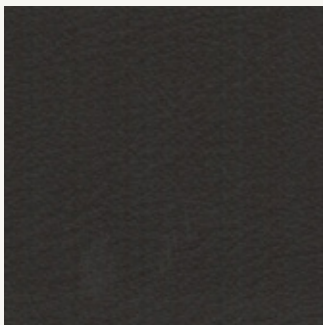
00/8 Lino / Linen



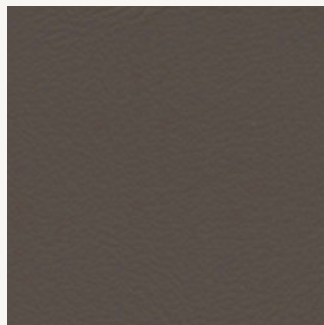
60/3 Oasi



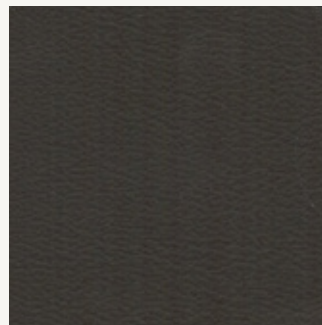
62 Siena / Sienna



90/1 Cacao / Cocoa



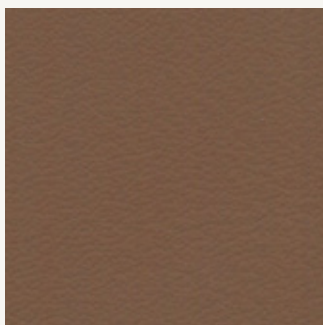
60/5 Creta / Clay



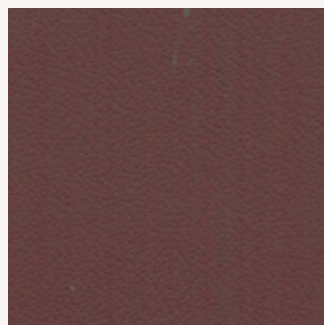
91 Moro / Dark Brown



61/4 Grigio Blu / Blue gray




30/9 Cuio



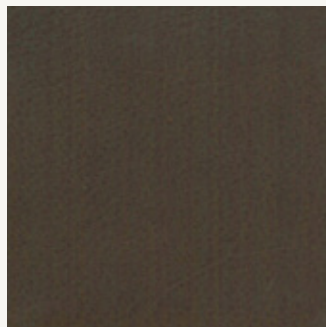
22 Melograno / Pomegranate

Cat. G | Pelle Anilina / Aniline Leather

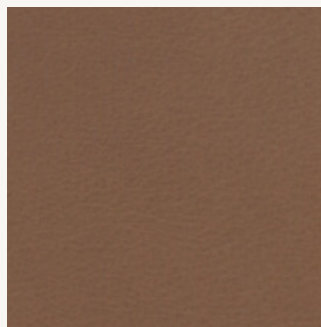
Caratteristiche / Features	
Composition	Natural Leather
Certification test passed	BS 5852-2006; TB 117-2013; EN ISO 1640; EN ISO 105-B02; EN ISO 3377-1; UNI 8433
Washing	



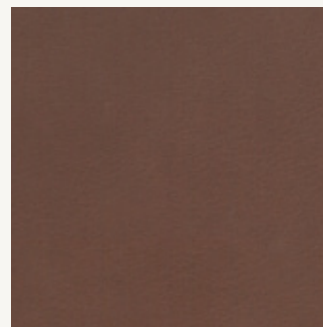
10/2 Lino / Linen



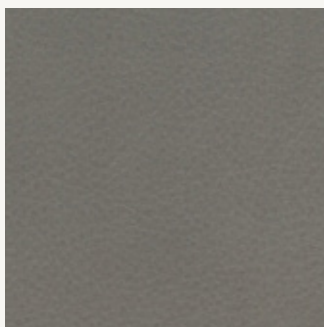
90 Moro / Dark brown



30/9 Noce / Walnut



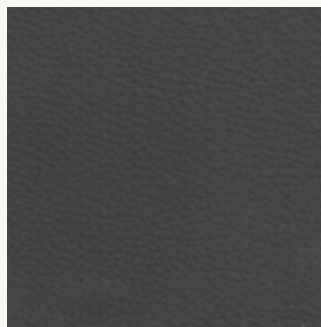
90/10 Marrone / Brown



60/3 Tortora / Taupe



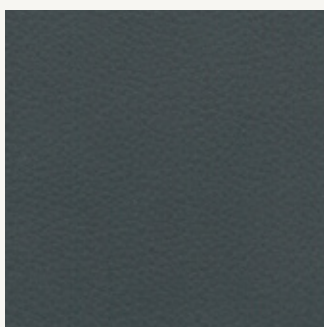
67/5 Cenere / Ash



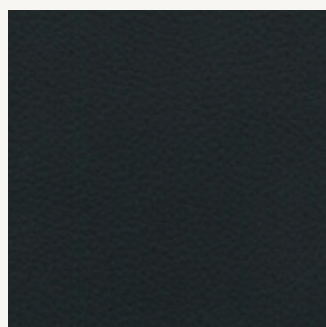
69/10 Elefante / Elephant



72/8 Verde Salvia / Sage Green



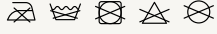
70/10 Blu Oceano / Blue Ocean

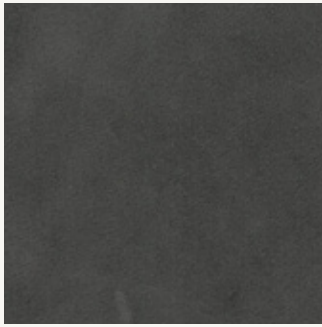


80 Nero / Black

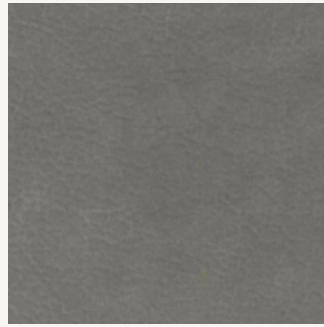
Cat. H | Nabuk / Nubuck

Caratteristiche / Features

Composition	Natural Leather
Certification test passed	IMO FTPC 8; BS 5852-1:1979; TB 117:2013; UNI EN ISO 105-B02; UNI EN ISO 5402-1; UNI EN ISO 3377-1; UNI EN ISO 3376; UNI EN ISO 3376
Washing	



61/6 Antracite / Charcoal Grey



60 Grigio / Grey



60/4 Ghiaccio / Ice



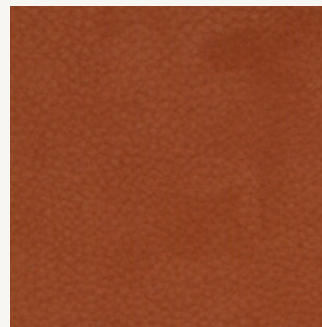
00/1 Avorio / Ivory



97 Cioccolato / Chocolate



30/9 Noce / Walnut



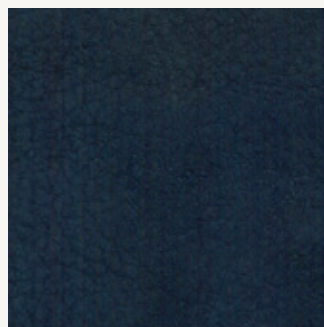
21/8 Ruggine / Rust



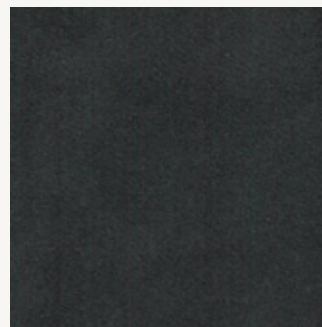
22 Bordeaux / Burgundy



90 Moro / Dark brown



70 Blu / Blue



66 Petrolio / Petroleum Blue



72/3 Emeraude

Cat. L Decorativi | MI CASA

Caratteristiche / Features	
Composition	83% CO; 17% PES;
Martindale	30.000
Washing	



42230331 Natural Ivory / Avorio naturale



42230126 Golden Ivory / Avorio dorato



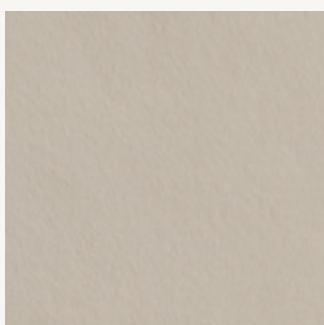
42230219 Silver Ivory / Avorio argentato

Cat. L Decorativi | ALPACA VELOUR AA

Caratteristiche / Features	
Composition	VI 33%; WO 29%; PC 17%; CO 14%; PL 5%; PA 2%;
Martindale	15.000
Certification Test Passed	FR - UK BS5852 CIGAR. TEST Upholstery; FR - UK BS5852 CIG/MATCH Upholstery; FR - UK BS5852 CRIB 5 Upholstery; FR - USA NFPA 260 Upholstery; FR - CAL TB 117 Upholstery
Washing	



004 Banguise white



005 Sabbia / Sand




006 Castoro / Beaver



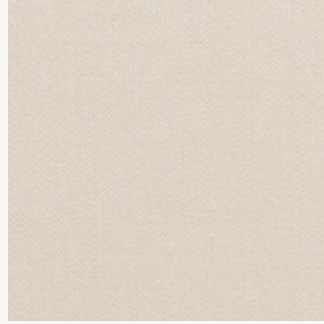
007 Cammello / Camel

Cat. L Decorativi | WOOL SATIN AP

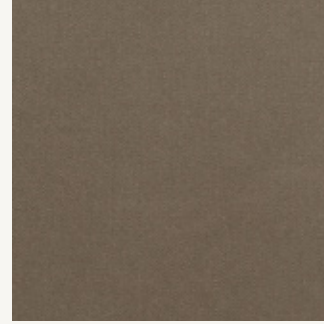
Caratteristiche / Features	
Composition	70% CO RECYCLED; 20% PES; 10% AF BACKING; 100% PES;
Martindale	20.000
Certification Test Passed	FR - CAL TB 117 UPHOLSTERY
Washing	 WR



003 Vaniglia / Vanilla



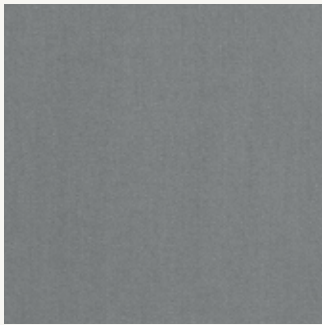
005 Mastice / Putty



008 Tortora / Taupe



031 Ardesia / Slate

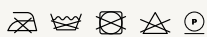


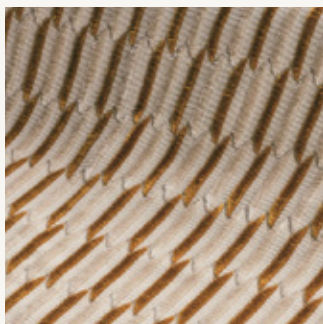
034 Argento / Silver



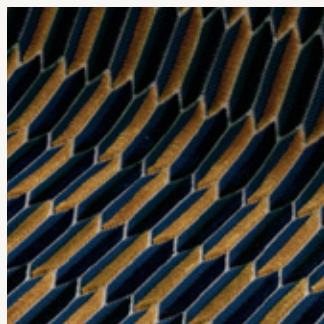
040 Terre del Rossiglione / Terre de Roussillon

Cat. L Decorativi | HEXAGONAL VELVETEP

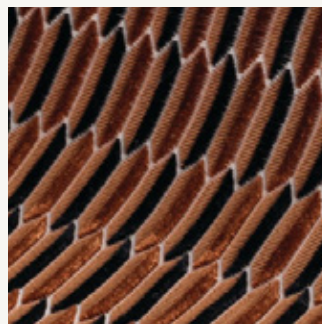
Caratteristiche / Features	
Composition	61% VI; 39% CO - PILE; 100% VISCOSE;
Martindale	60.000
Washing	



M346401 Mordorè

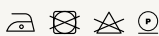


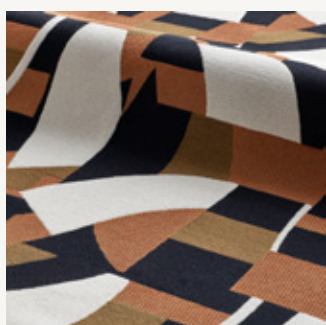
M346704 Bleu éternel



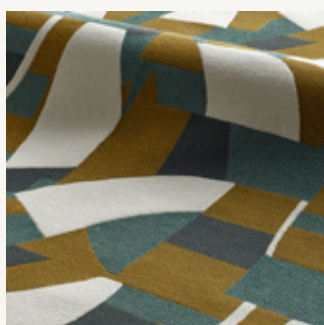
M346906 Cuivre

Cat. L Decorativi | JACQUARD CHIMERIQUE

Caratteristiche / Features	
Composition	36% CO; 25% VI; 20% PES; 11% PC; 8% AF;
Martindale	20.000
Washing	



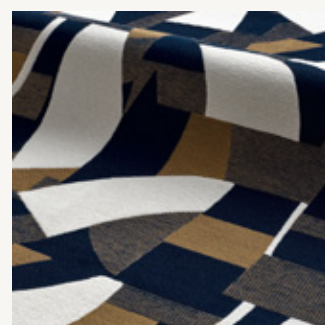
M349104 Arabesque



M349701 Céladon



M349802 Terracotta



M349903 Bleu Misia

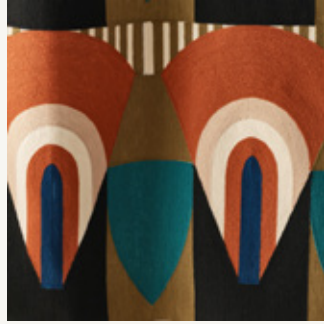
Cat. L Decorativi | TALISMAN S

Caratteristiche / Features

Composition	100% CO - ACRYLIC EMBROIDERY
Washing	



M339702 Bleu Misia



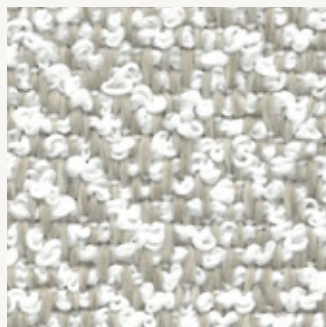
M339601 Terre d'Ombre

Cat. M Outdoor | LIMLORKEY

Caratteristiche / Features	
Composition	88% PP; 12% PL;
Martindale	30.000
Certification Test Passed	UNI EN ISO 12947-2; ISO 12945-2; UNI EN ISO 105-B02; UNI EN ISO 105-B04; BS 5852 CIGARETTE; CAL TB 117
Washing	



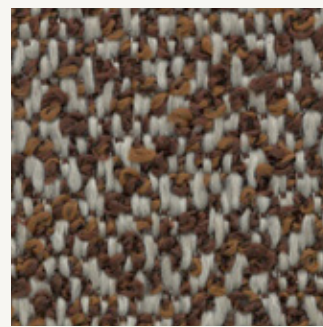
40 Avorio / Ivory



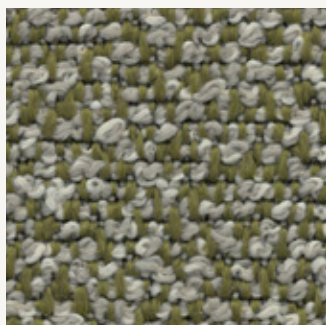
206 Corda / Rope



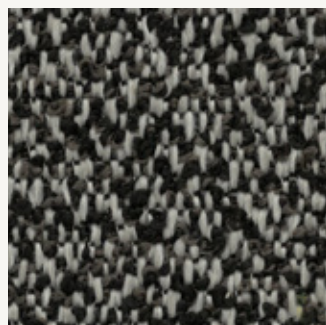
205 Marrone Chiaro / Light Brown



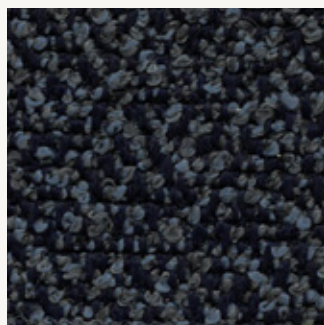
216 Bronzo / Bronze



213 Verde / Green



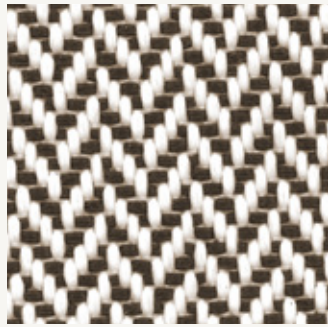
207 Marrone Scuro / Dark Brown



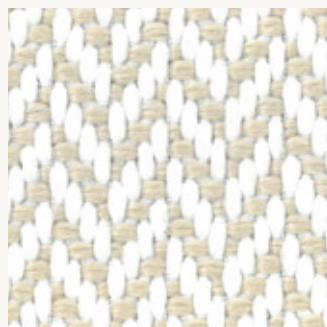
218 Blu / Blue

Cat. M Outdoor | IKON

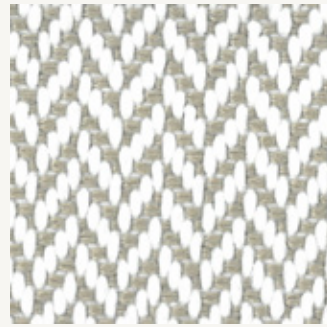
Caratteristiche / Features	
Composition	100% PP
Martindale	30.000
Certification Test Passed	CALIFORNIA TB 117:2013; BS5852 PART 0 (CIGARETTE); EN ISO 12947-2; EN ISO 12945-2; EN ISO 105-B02; EN ISO 105-B04; EN ISO 105- X12
Washing	



02/2 Marrone-Bianco / Brown-White



02/20 Lino-Bianco / Linen - White



02/11 Corda-Bianco / Rope-White



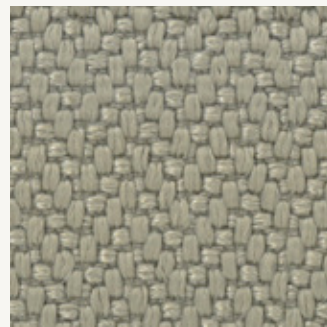
02/23 Verde Oliva-Bianco / Olive Green-White



06 Marrone / Brown



03 Lino / Linen



31 Corda / Rope



08 Verde Oliva / Olive Green

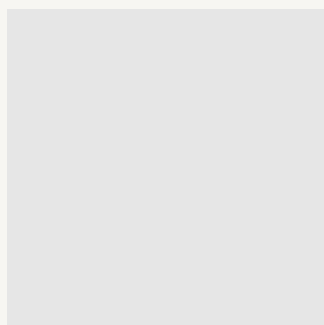


02 Bianco / White

Cat. Outdoor EVA



Mattone / Brick



Panna / Cream
*not present in the sample box

Perfetto per l'uso esterno grazie alla sua leggerezza, resistenza agli urti e alla corrosione, garantendo comfort e durata.
Ideal for outdoor use thanks to its lightweight, impact and corrosion resistance, ensuring comfort and durability.

Legenda

MARMINI / MARBLE

White Silk Matt: Kenya 310 Table, Kenya 240 Table, Kenya Coffee Table, Kenya Console, Dione Table, Dione Bistrot Table, Dione Lazy Susan Table, Dione Lazy Susan 220 Table, Dione Coffee Table, For Hall Oval Table, For Hall Squircler Table, For Hall Coffee Table.

Calacatta: Dione Table, Dione Bistrot Table, Dione Lazy Susan Table, Dione Lazy Susan 220 Table, Dione Coffee Table, For Hall Oval Table, For Hall Squircler Table, For Hall Coffee Table, For Hall Console

Panda White: Claude Coffee Table

Quartzite Blue Roma: Kenya 310 Table, Kenya 240 Table, Kenya Coffee Table, Kenya Console

Rosa Egeo: Imperfect Coffee Table (Side and Marble model), Socrate Bookcase

Silver Wave Brown: For Hall Oval Table, For Hall Squircler Table, For Hall Coffee Table, For Hall Console

Sahara Black: For Hall Oval Table, For Hall Squircler Table, For Hall Coffee Table, For Hall Console

Grand Antique: Ipanema Coffee Table

Emerald Green: Claude Coffee Table

Bronze Amani: For Hall Oval Table, For Hall Squircler Table, For Hall Coffee Table, For Hall Console

Sahara Brown: Dione Dark Table, Dione Dark Coffee Table, Dione Bistrot Table

METALLI / METALS

Bronzo Shadow Opaco / Matt Shadow Bronze: Alba Round Table, Alba Rectangular Table, Alba Bistrot Table, Alba Console, Grieta Table, Ufficio Bookcase, Socrate Bookcase, Maputo Cache-Pot (A, B), Accra Cache-Pot, Convivier Bar Trolley, Fenpei Modular Sofa, Fenpei Coffee Table

Bronzo Ottone Opaco / Matt Bronzed Brass: Ellipse Coffee Table, Claude Coffee Table, Soft Ratio Coffee Table, U Chair, Scranno Stool, Soft Ratio Sofa, Tugurium Cot, Parabolica Armchair, Parabolica Ottoman, Abstract High Cabinet, Abstract Low Cabinet, Soft Ratio High Cabinet, Soft Ratio Low Cabinet, For Living Showcase, Appendiabito, Vassoio, Testa Head Bookend, Labilis Composition Suspension Lamp, Labilis Rings Suspension Lamp, Labilis Mega Ring Suspension Lamp, Labilis Wall Lamp, Fair Wall Lamp, Galaxy Wall Lamp, Ambra Table Lamp

Oro Lucido / Polished Gold: Claude Coffee Table, Imperfect Coffee Table (Side and Metal model), Ipanema Sofa, Ipanema Armchair, U Lounge, Parabolica Armchair, Parabolica Ottoman, Stellantis Suspension Lamp, Anodine Circle Wall Lamp, Circle Wall Lamp, Galaxy Wall Lamp

Oro Opaco / Matt Gold: Dione Table, Dione Bistrot Table, Dione Lazy Susan Table, Dione Lazy Susan 220 Table, Dione Coffee Table, Dione Dark Table, Dione Dark Coffee Table, Nettuno Table, Mars Table, For Hall Oval Table, For Hall Squircler Table, For Hall Coffee Table, For Hall Console, Elegance Chaise Longue, Petra Bookcase, Socrate Bookcase, Fine Collection 180A, Fine Collection Bedside Table, Flare Screen, Best World Octagonal, Best World Rectangular, Best World Square, My Lamp Suspension, My Lamp Round Suspension, Kali Suspension Lamp, Golden Cloud Suspension Lamp, Golden Disc Suspension Lamp, My Lamp Wall, Kali Wall Lamp, Anodine Wall Lamp, Anodine Circle Wall Lamp, Golden Disc Wall Lamp, Golden Cloud Wall Lamp, My Lamp Ceiling, Soreluna Floor Lamp, My Lamp Floor, Anodine Floor Lamp, Icone Luminose Floor Lamp, My Lamp Table Lamp, Anodine Table Lamp, Nettuno Table Lamp

Champagne a Satinatura Orbitale / Champagne Orbital Satin: Arche Side Table, Arche Coffee Table, Hyperbole Coffee Table

Ottone Lucido / Polished Brass: Sofia Chair, Echo Barstool, Venice Stool, Illusio Suspension Lamp, Illusio Wall Lamp, Origami Wall Lamp, Anodine Floor Lamp, Anodine Table Lamp

Ottone Opaco Satinato / Matt Satin Brass: Dione Table, Dione Bistrot Table, Dione Lazy Susan Table, Dione Lazy Susan 220 Table, N°5 Chair, Crudelia Armchair, For Living Showcase, Allure Suspension Lamp, Allure Side Suspension Lamp, Joy Suspension Lamp, Origami Wall Lamp, Joy Wall Lamp, Comet Floor Lamp, Comet Table Lamp

Nichel Nero Opaco / Matt Black Nickel: For Hall Coffee Table, Ipanema Coffee Table, Ipanema Sofa, Ipanema Armchair, Infinity Mirror, Best World Rectangular, My Lamp Suspension, My Lamp Round Suspension, My Lamp Wall, My Lamp Ceiling, My Lamp Floor, My Lamp Table,

Nichel Nero Lucido / Polished Black Nickel: Venice Stool, Venice Office, U Lounge

Titanio Opaco / Matt Titanium: Circle Wall Lamp

METALLI VERNICIATI / VARNISHED METALS

RAL 9010 Avorio / Ivory: Circle Lamp

Bronzo / Bronze: Circle Lamp

RAL 9004 Nero / Black: Ellipse Coffee Table, Soft Ratio Coffee Table, U Chair, Soft Ratio Sofa, Soft Ratio High Cabinet, Soft Ratio Low Cabinet, Flare Screen, Labilis Composition Suspension Lamp, Labilis Rings Suspension Lamp, Labilis Mega Ring Suspension Lamp, Fanus Suspension Lamp, Illusio Suspension Lamp, Labilis Wall Lamp, Origami Wall Lamp, Illusio Wall Lamp, Fair Wall Lamp, Fanus Floor Lamp, Fanus Table Lamp, Nucleo Table, Nucleo Lounge Table, Nucleo Console

RAL 7032 Grigio Ghiaia / Pebble Grey: U Outdoor Chair

NCS S3560-Y80R Mattone / Brick: U Outdoor Chair

LAMINATI / LAMINATED

Oro Satinato / Matt Gold: Venice Swing Armchair, Fine Collection Chest Of Drawers, Fine Collection Bedside Table

PIETRE / STONE

Pietra Vicentina Levigata Avorio / Smooth Vicenza Stone Ivory: Alba Round Table, Alba Rectangular Table, Alba Bistrot Table, Alba Console, Arche Side Table, Arche Coffee Table, Lens Coffee Table, Hyperbole Coffee Table

Pietra Vicentina Sabbziata Grigio Chiaro / Sandblasted Vicenza Stone Light Grey: Arche Side Table, Arche Coffee Table, Hyperbole Coffee Table

Travertino Classic / Travertine Classic: Imane Table, Imane Coffee Table, Soft Ratio Coffee Table, Soft Ratio (Chaise Longue)

Travertino Rosso / Travertine Red: Kenya Table, Kenya Coffee Table, Kenya Console

Petra Leccese Beige / Lecce Stone Beige: Accra Cache Pot

Pietra Naturale Bianco / Natural Stone White: Maputo Cache-Pot (A,B)

Pietra Naturale Dove / Natural Stone Dove: Maputo Cache-Pot (C)

Pietra Dolomia / Dolomia Stone: Nucleo Table, Nucleo Console

Granito Antico Nero Texture Rigata / Antique Black Granite Striped Texture: Hyperbole Coffee Table

PIETRE RICOSTITUITE / RECONSTITUTED STONE

Pietra Ricostituita Avorio / Reconstituted Stone Ivory: Arche Side Table, Arche Coffee Table

Pietra Ricostituita Grigio / Reconstituted Stone Grey: Arche Side Table, Arche Coffee Table

Pietra Ricostituita White COD 78 / Reconstituted Stone Biaco COD 78: Arche Side Table, Arche Coffee Table

Carbone Naturale Ricostituito Con Trucioli Di Ottone Da Recupero / Reconstituted Natural Carbon Containing Recycled Brass Shavings: Arche Side Table, Arche Coffee Table

LEGNI / WOODS

Frassino Sbiancato / Bleached Ashwood: Gio Chair, Selima Chair, Vao Bed, Selima Console, Selima Bedside

Frassino Tinto Noce / Walnut Stained Ashwood: Kenya 310 Table, Kenya 240 Table, Kenya Coffee Table, Kenya Console, Selima Console, Sari Chair, Enso Chair, Giano Chair, Gio Chair, Selima Chair, Scranno Stool, Tugurium Cot, Sari Lounge, Socrate Bookcase, Abstract High Cabinet, Abstract Low Cabinet, Selima Bedside Table, Appendiabito, Vassoio, Testa Head Bookend

Frassino Tinto Scuro / Dark Stained Ashwood: N°5 Chair, Ama Modular Sofa, Ama Sofa, Ama Daybed Large, Ama Dormeuse, Ama Gran Pouf

Frassino Tinto Nero / Black Stained Ashwood: Echo Chair, Echo Barstool, Giano Chair, Crudelia Armchair

Frassino con Trattamento Acetico / Acetic Finished Ashwood: Gio Chair, Selima Chiar, Vao 380 Sofa, Vao 250 Sofa, Vao Love Seat 150, Vao Armchair, Coral Sofa, Coral Armchair, Selima Console

Frassino Brunito Olivato Chiaro / Browned Ashwood Light Olive: Fenpei Coffee Table

Frassino Brunito Olivato Scuro / Browned Ashwood Dark Olive: Fenpei Coffee Table

Eucalipto / Eucalyptus: Nettuno Table, Dea Night Storage

Noce Canaletto Oliato / Oiled Canaletto Walnut: Comet Floor Lamp, Comet Table Lamp

Frakè 100 Gloss: Ipanema Coffee Table, Best World Rectangular Mirror

Faggio Verniciato Nero Opaco / Varnished Beechwood Matt Black: Venice Stool, Venice Bergere

Iroko: Imane Table, Imane Coffee Table, Imane Chair, Imane Sofa, Imane Armchair

LACCATI / LACQUERING

NCS S 1500 N 100 GLOSS Perla / Pearl: My Beauty Desk

100 GLOSS Nero Polvere Oro / Black Golden Dust: Mars Table

NCS 5010Y50R 100 GLOSS Grigio Marrone / Grey Brown: My Beauty Desk, Soft Ratio High Cabinet, Soft Ratio Low Cabinet, Fine Collection 180A, Fine Collection Chest Of Drawers, Fine Collection Bedside Table

Oro Opaco / Matt Gold: Audrey Chair, Odissea Bed

RAL 9005 100 GLOSS Nero / Black: Mars Table, My Beauty Desk

RAL 1013 100 GLOSS Avorio / Ivory: My Beauty Desk, Fine Collection 180A, Fine Collection Chest of Drawers, Fine Collection Bedside Table

RAL 1035 Beige Perlato / Pear Beige: Venice Sofa, Venice Armchair

RAL 8019 100 GLOSS Marrone / Brown: My Beauty Desk, Convivier Bar Trolley

SAFFIANO PATTERN 100 GLOSS Bronzo / Bronze: Ipanema Coffee Table

SAFFIANO PATTERN 100 GLOSS Arancio / Arancio: Ipanema Coffee Table

SAFFIANO PATTERN 100 GLOSS Bordeaux / Burgundy : Ipanema Coffee Table

SAFFIANO PATTERN 100 GLOSS Verde / Green: Ipanema Coffee Table

NCS S 6530G10Y 100 GLOSS Verde / Green: Nucleo Table, Nucleo Lounge Table, Nucleo Console

CERAMICHE / CERAMICS

Ceramica di Faenza Opaca Bianco Ottico / Matt Faenza Ceramic Optical White: Oscar Table Lamp

Ceramica di Vietri a coste Bianco / Ribbed Vietri Ceramic White: Dione Coffee Table

Ceramica di Vietri a coste Grafite / Ribbed Vietri Ceramic Graphite: Dione Dark Coffee Table

Ceramica di Vietri Smaltata Bianco / Glazed Vietri Ceramic White: Kaala Table Lamp

Ceramica di Vietri Smaltata Giallo / Glazed Vietri Ceramic Yellow: Kaala Table Lamp

Ceramica di Sicilia Blu / Sicilia Ceramic Blue: Terminal Suspension Lamp

Ceramica di Sicilia Bianco / Sicilia Ceramic White: Terminal Suspension Lamp

Monolite Ipergres Finitura Metallica Ottone / Metallic Brass Finished: Ottomana Chair

Monolite Ipergres Finitura Metallica Zinco / Metallic Zinc Finished: Ottomana Chair

Monolite Ipergres Salvia / Sage: Grieta Table, Ottomana Chair

Monolite Ipergres Oceano / Ocean: Grieta Table, Ottomana Chair

Monolite Ipergres Terracotta: Grieta Table, Ottomana Chair

Monolite Ipergres Grigio / Grey: Grieta Table

3D Printed Natural Fired Gress: Haibu Suspension Lamp

VETRI / GLASS

Specchio Satinato Bronzo / Matt Frosted Glass Bronze: Nettuno Coffee Table, Dea Night Storage, Convivier Bar Trolley

Specchio Satinato Grigio / Matt Frosted Glass Grey: Uffizio Bookcase

RAL 8019 Marrone / Brown: Nettuno Coffee Table, For Hall Oval Table

RAL 3007 Amaranto / Reddish Purple: Nettuno Coffee Table, For Hall Oval Table, Joy Suspension Lamp, Joy Wall Lamp

TRANSPARENT Avana: Nettuno Coffee Table, Imperfect Coffee Table (Side and Glass model), Soft Ratio Coffee Table, Uffizio Bookcase, Socrate Bookcase, Convivier Bar Trolley

Specchio Lucido Bronzo / Polished Mirrored Glass Bronze: Gong Decorative Object

MATERIALI SPECIALI / SPECIAL MATERIALS

Fibra Di Canapa Nepalese Beige / Nepalese Hemp Fiber Beige: Oscar Table Lamp, Kaala Table Lamp

Fibra Di Canapa Nepalese Turchese / Nepalese Hemp Fiber Turquoise: Kaala Table Lamp


Travertino Ricostituito Avorio / Reconstituted Travertine Ivory: Kenya Table, Kenya Coffee Table, Kenya Console, Circle Outdoor Lamp

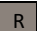
Travertino Ricostituito Terra di Siena bruciata / Reconstituted Travertine Burnt Sienna: Kenya Table, Kenya Coffee Table, Kenya Console, Circle Outdoor Wall Lamp

Eva Mattone / Eva Brick: U Outdoor Chair

Eva Panna / Eva Cream: U Outdoor Chair

	CATEGORY	MATERIAL NAME	AMA	AUDREY	BABOU	CORAL	CRUDELIA	ECHO	ELEGANCE	ENSO	FENPEI	GIANO	IMANE	IPANEMA	N°5	LEMMA	LUNA SWING	PARABOLICA	ODISSEA	SARI	SCRANNO	SELIMA	SOFIA	SOFT RATIO	U CHAIR/LOUNGE	VAO	VENICE	LOOSE CUSHIONS		
			INDOOR	A	CHENILLE DZ-YOU									R													R			
A	BYR CHENILLE										R														R					
A	BLENDED LINEN										R														R					
A	LUC CHENILLE										R														R					
A	SHEEPLAND										R														R					
B	LIM PARCOT CANNETÈ																								R					
B	VELVET MANA																								R					
B	VELLUTO A&E																								R					
B	SATEEN OA																													
C	BOUCLÈ WOOL											R													R					
C	LUXURY CHENILLE LIMLUCI											R													R					
D	JACQUARD FLO																								R					
D	JACQUARD TWIST																								R					
E	ECO-FRIENDLY LEATHER											R													R					
F	BOVINE LEATHER											R													R					
G	ANILINE LEATHER											R													R					
H	NUBUCK											R													R					
DECORATIVE	L	MI CASA																												
	L	ALPACA VELOUR AA																												
	L	WOOL SATIN AP																												
	L	HEXAGONAL VELVETEP																												
	L	JACQUARD CHIMÉRIQUE																												
	L	TALISMAN S																												
OUTDOOR	M	LIMLORKEY																												
	M	IKON																												
	N	EVA																												
O	CUOIO LEATHER																													

 USABLE

 USABLE - REMOVABLE COVER

Care and
mainte-
nance

MARMI / MARBLE

Pulire con un panno morbido leggermente inumidito e asciugarlo completamente. Evitare l'uso di sostanze acide che potrebbero danneggiare la superficie. I materiali vengono sottoposti ad un trattamento idro oleo repellente, che tuttavia non ne garantisce la totale protezione. Essendo materiali naturali, le venature e le tonalità di colore possono presentare delle differenze che non devono essere considerate difetti, bensì pregi che esaltano l'unicità del prodotto.

Clean marbles using a lightly dampened soft cloth and fully dry them. Avoid using any acidic substances that may damage their surface. Although marbles undergo both hydrophobic and oleophobic treatments, total protection is not guaranteed. Being marbles natural materials, their veins and colours may vary; this is not to be considered a flaw, but rather a characteristic enhancing the uniqueness of the product.

METALLI / METALS

Pulire con un panno morbido in microfibra leggermente umido. Asciugare completamente per evitare la formazione di ruggine. Per quanto riguarda l'ottone, pulire con un panno morbido inumidito con prodotti specifici per ottone. Asciugare completamente per evitare l'ossidazione. Applicare occasionalmente un prodotto specifico per mantenere la lucentezza.

Clean metals using a lightly dampened soft microfiber cloth and dry them completely so as to prevent any potential rusting. As for the brass, use a soft cloth dampened with a product specifically for treating brass and dry it completely so as to prevent oxidation. Occasionally apply specific products to maintain shininess.

METALLI VERNICIATI / VARNISHED METALS

Pulire con un panno morbido in microfibra leggermente umido. Asciugare completamente per evitare la formazione di ruggine.

Clean varnished metals using a lightly dampened soft microfiber cloth and dry them completely to prevent any potential rusting.

LAMINATI / LAMINATED

Pulire con un panno morbido in microfibra leggermente umido. Asciugare completamente per evitare la formazione di ruggine.

Clean laminated metals using a lightly dampened soft microfiber cloth and dry them completely to prevent any potential rusting.

PIETRE / STONES

Pulire con un panno morbido leggermente inumidito e asciugarlo completamente. Evitare l'uso di sostanze acide che potrebbero danneggiare la superficie. I materiali vengono sottoposti ad un trattamento idro oleo repellente, che tuttavia non ne garantisce la totale protezione. Essendo materiali naturali, le venature e le tonalità di colore possono presentare delle differenze che non devono essere considerate difetti, bensì pregi che esaltano l'unicità del prodotto.

Clean stones using a lightly dampened soft cloth and fully dry them. Avoid using any acidic substances that may damage their surface. Although stones undergo both hydrophobic and oleophobic treatments, total protection is not guaranteed. Being stones natural materials, their veins and colours may vary; this is not to be considered a flaw, but rather a characteristic enhancing the uniqueness of the product.

PIETRE RICOSTITUITE/ RECONSTITUTED STONES

Pulire con un panno morbido leggermente inumidito e asciugarlo completamente. Evitare l'uso di sostanze acide che potrebbero danneggiare la superficie. I materiali vengono sottoposti ad un trattamento idro oleo repellente, che tuttavia non ne garantisce la totale protezione. Essendo materiali naturali, le venature e le tonalità di colore possono presentare delle differenze che non devono essere considerate difetti, bensì pregi che esaltano l'unicità del prodotto.

Clean reconstituted stones using a lightly dampened soft cloth and fully dry them. Avoid using any acidic substances that may damage their surface. Although stones undergo both hydrophobic and oleophobic treatments, total protection is not guaranteed. Being stones natural materials, their veins and colours may vary; this is not to be considered a flaw, but rather a characteristic enhancing the uniqueness of the product.

LEGNI / WOODS

Pulire con un panno morbido leggermente umido per rimuovere la sporcizia. Evitare l'uso di detergenti aggressivi a base di alcool o solventi che potrebbero danneggiare le varie finiture. Evitare spugne abrasive.

Clean woods using a lightly dampened soft cloth to remove dirt. Avoid using any harsh cleanser containing alcohol or solvent that may damage the finish. Avoid using any abrasive sponges as well.

LACCATI / LACQUERINGS

Pulire con un panno morbido leggermente umido per rimuovere la sporcizia. Evitare l'uso di detergenti aggressivi a base di alcool o solventi che potrebbero danneggiare le varie finiture. Evitare spugne abrasive.

Clean lacquerings using a lightly dampened soft cloth to remove dirt. Avoid using any harsh cleanser containing alcohol or solvent that may damage the finish. Avoid using any abrasive sponges as well.

CERAMICHE / CERAMICS

Pulire con acqua tiepida e un detergente delicato. Asciugare completamente per evitare la formazione di aloni o tracce calcaree.

Clean ceramics using lukewarm water and gentle cleansers. Dry them completely to prevent any clouding or limescales.

VETRI / GLASS

Pulire con un detergente per vetri e un panno non abrasivo. Evitare di utilizzare materiali abrasivi che potrebbero graffiare o danneggiare la superficie.

Clean glass using glass cleansers and non-abrasive cloths. Avoid using any abrasive materials that may damage their surface.

MATERIALI SPECIALI / SPECIAL MATERIALS

Evitare qualsiasi contatto con l'acqua, pulire con un panno asciutto. Per quanto riguarda il Travertino Ricostituito, pulire con un panno morbido leggermente inumidito e asciugarlo completamente. Utilizzare un prodotto specifico per pietre. Evitare l'uso di sostanze acide che potrebbero danneggiare la superficie.

Avoid any contact of special materials with water and clean them using dry cloths. As for the Reconstituted Travertine, clean it using a lightly dampened soft cloth and fully dry it. To clean it, use a specific stone cleanser. Avoid using any harsh substances that may damage its surface.

ECOPELLE TOP / ECO FRIENDLY LEATHER TOP

Pulire con un detergente specifico per la pelle (o acqua/sapone delicato) e un panno morbido, tamponando la pelle molto delicatamente. Applicare periodicamente una crema idratante per pelle per mantenerla morbida e prevenire screpolature. Evitare prodotti aggressivi a base di alcool o solventi. Evitare spugne abrasive.

Clean using a specific leather cleanser or gentle water/soap and a soft cloth; then gently dab the leather. Apply a leather moisturiser periodically to keep it soft and prevent cracking. Avoid any harsh products containing alcohol or solvents and abrasive sponges as well.

PELLE BOVINA / BOVINE LEATHER

Pulire con un detergente specifico per la pelle (o acqua/sapone delicato) e un panno umido, tamponando la pelle molto delicatamente. Applicare periodicamente una crema idratante per pelle per mantenerla morbida e prevenire screpolature. Evitare prodotti aggressivi a base di alcool o solventi. Evitare spugne abrasive.

Clean using a specific leather cleanser or gentle water/soap and a soft cloth; then gently dab the leather. Apply a leather moisturiser periodically to keep it soft and prevent cracking. Avoid any harsh products containing alcohol or solvents and abrasive sponges as well.

PELLE ANILINA / ANILINE LEATHER

Pulire con un detergente specifico per la pelle (o acqua/sapone delicato) e un panno morbido, tamponando la pelle molto delicatamente. Applicare periodicamente una crema idratante per pelle per mantenerla morbida e prevenire screpolature. Evitare prodotti aggressivi a base di alcool o solventi. Evitare spugne abrasive. A causa della totale naturalezza della sua superficie, è necessario proteggere la pelle anilina dalla luce solare diretta, dal calore eccessivo e dagli oggetti appuntiti.

Clean using a specific leather cleanser or gentle water/soap and a soft cloth; then gently dab the leather. Apply a leather moisturiser periodically to keep it soft and prevent cracking. Avoid any harsh products containing alcohol or solvents and abrasive sponges as well. In light of the natural surface of Aniline Leather, protection from direct sunlight, excessive heat, and sharp objects is required.

NABUK/ NUBUCK

Pulire con un detergente specifico per nabuk (o acqua/sapone delicato) e un panno morbido, tamponando molto delicatamente. Applicare periodicamente una crema idratante per nabuk per mantenerla morbida e prevenire screpolature. Evitare prodotti aggressivi a base di alcool o solventi. Evitare spugne abrasive. A causa della totale naturalezza della sua superficie, è necessario proteggere il nabuk dalla luce solare diretta, dal calore eccessivo e dagli oggetti appuntiti.

Clean using a specific nubuck cleanser or gentle water/soap and a soft cloth; then gently dab the leather. Apply a nubuck moisturiser periodically to keep it soft and prevent cracking. Avoid any harsh products containing alcohol or solvents and abrasive sponges as well. In light of the natural surface of Nubuck, protection from direct sunlight, excessive heat, and sharp objects is required.

PELLE STAMPATA / PRINTED LEATHER

Pulire con un detergente specifico per la pelle (o acqua/sapone delicato) e un panno morbido, tamponando la pelle molto delicatamente. Applicare periodicamente una crema idratante per pelle per mantenerla morbida e prevenire screpolature. Evitare prodotti aggressivi a base di alcool o solventi. Evitare spugne abrasive.

Clean using a specific leather cleanser or gentle water/soap and a soft cloth; then gently dab the leather. Apply a leather moisturiser periodically to keep it soft and prevent cracking. Avoid any harsh products containing alcohol or solvents and abrasive sponges as well.

CUOIO LEATHER

Pulire con un detergente specifico per la pelle (o acqua/sapone delicato) e un panno morbido, tamponando la pelle molto delicatamente. Applicare periodicamente una crema idratante per pelle per mantenerla morbida e prevenire screpolature. Evitare prodotti aggressivi a base di alcool o solventi. Evitare spugne abrasive.

Clean using a specific leather cleanser or gentle water/soap and a soft cloth; then gently dab the leather. Apply a leather moisturiser periodically to keep it soft and prevent cracking. Avoid any harsh products containing alcohol or solvents and abrasive sponges as well.

CAT. SUPERIOR

Aspirare regolarmente per rimuovere la sporcizia come polvere e briciole. In caso di macchie, tamponare delicatamente con un panno morbido con una soluzione composta da acqua e detergente delicato esclusivamente per i tessuti che prevedono la pulitura ad acqua. Mentre per i tessuti a secco utilizzare pulitura a secco. Evitare l'uso di candeggina o detersivi aggressivi che potrebbero danneggiare il tessuto.

Vacuum regularly to remove dirt such as dust and crumbs. In case of stains, gently blot with a soft cloth with a solution composed of water and mild detergent exclusively for fabrics that allow water-based cleaning. For dry-clean-only fabrics, use dry cleaning. Avoid the use of bleach or aggressive detergents that may damage the fabric.

CAT. DELUXE

Aspirare regolarmente per rimuovere la sporcizia come polvere e briciole. Lavare con acqua tiepida e un detergente delicato. Evitare l'uso di candeggina o detersivi aggressivi che potrebbero danneggiare il tessuto.

Vacuum regularly to remove dirt such as dust and crumbs. Wash using lukewarm water and a mild detergent. Avoid using bleach or aggressive detergents that may damage the fabric.

CAT. DECORATIVE

Aspirare regolarmente per rimuovere la sporcizia come polvere e briciole. In caso di macchie, tamponare delicatamente con un panno morbido con una soluzione composta da acqua e detergente delicato esclusivamente per i tessuti che prevedono la pulitura ad acqua. Mentre per i tessuti a secco utilizzare pulitura a secco. Evitare l'uso di candeggina o detersivi aggressivi che potrebbero danneggiare il tessuto.

Vacuum regularly to remove dirt such as dust and crumbs. In case of stains, gently blot with a soft cloth with a solution composed of water and mild detergent exclusively for fabrics that allow water-based cleaning. For dry-clean-only fabrics, use dry cleaning. Avoid the use of bleach or aggressive detergents that may damage the fabric.

CAT. OUTDOOR

Aspirare regolarmente per rimuovere la sporcizia come polvere e briciole. Lavare con acqua tiepida e un detergente delicato. Evitare l'uso di candeggina o detersivi aggressivi che potrebbero danneggiare il tessuto.

Vacuum regularly to remove dirt such as dust and crumbs. Wash using lukewarm water and a mild detergent. Avoid using bleach or aggressive detergents that may damage the fabric.



PAOLO CASTELLI

DOCUMENT DATED:
December 2024

BOLOGNA
Headquarter

MILAN
Showroom

PARIS
Showroom

HEADQUARTER VIA I° MAGGIO, 93 | 40064 OZZANO DELL'EMILIA | BOLOGNA - ITALY
TEL. +39 051 4695511 | info@paolocastellispa.com | www.paolocastelli.com